



KELION^{EC}

EMULSIONNABLE CONCENTRATE
INSECTICIDE ACARICIDE
for treatment of livestock buildings

BIOCIDAL USE

Formulation

Composition	Etofenprox 300g/L / Natural Pyrethrum 1g/L
Type de formulation	Emulsionnable concentrate
Users	Professionals
Approved name	KELION ^{EC}

Usable in the presence of animals.*

Strenghts

- IMMEDIATE SHOCK EFFECT
- PERSISTENCE OF ACTION OF 8 WEEKS
- 500 mL = 1000 m² TREATED

Action

KELION^{EC} effectively and radically eliminates:

- Flies
- Midges
- Litter beetles (*Alphitobius diaperinus*)
- Red mites
- Cockroaches
- Fleas
- Cucujids
- *Imicola Culicoides*.

Insects and mites are slaughtered in less than thirty minutes and surfaces remain protected for **8 weeks**.

Retreat in case of new infestation and before any entry of animals as part of the breeding. The product is effective on porous and non-porous surfaces: tiling, breeze block, sheet metal, wood. The product, with its innovative formula, has a double effectiveness: a shock effect and a long persistence of action: 8 weeks.



Reference & Packaging

500mL bottle

Precautions for use

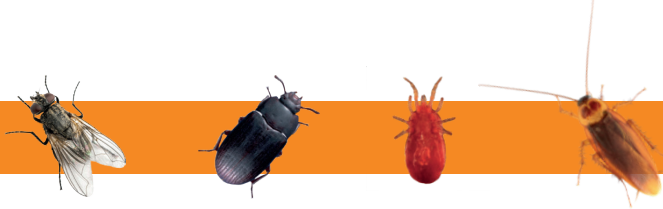
USE INSECTICIDES WITH CAUTION. Before use, always read the label and product information. Dangerous. Observe the precautions for use.

Dispose of the unused product and its packaging in accordance with the regulations in force. Do not dispose of residues in sewers and waterways. Do not reuse the packaging.

It is advisable to wear gloves and wash your hands after each use. For first aid instructions, contact the nearest poison control center.

Storage: Keep out of reach of children and pets. Store in the original packaging and do not reuse the packaging.

* Avoid direct contact with animals during application.



KELION^{EC}

EMULSIONNABLE CONCENTRATE
INSECTICIDE ACARICIDE
for treatment of livestock buildings

BIOCIDAL USE

Instructions and dose of use

Dilution :

- 500mL in 50L of water for 1000m² to treat.
- 50ml in 5L of water per 100m² of surface to be sprayed

The product can be used by spraying in ruminant livestock buildings: dairy cows, calves, goats, kids, sheep, lambs / pigs, rabbits, horses and poultry: breeding and laying meat. The product is approved for disinsection of pet housing, breeding equipment, pet transport equipment, pet food preparation rooms. It is also authorized for insecticide treatment of transport equipment, storage equipment and storage rooms.

Flies - Midges - Cockroaches: Apply spray to the walls as soon as the first flies or cockroaches appear.

Biting midges vectors of Bluetongue such as *Ixodes ricinus*: apply the product by spraying on the walls as soon as the first midges appear.

Litter beetles - Cucujids: spray the product on the walls and ceilings 2 days before the end of the crawlspace, at the re-heating of the building for maximum efficiency.

Red mites: treat the buildings and equipment one week before the end of the crawlspace after performing a complete cleaning to remove all clumps of organic material that can be used as a refuge for red mites by insisting on the cages, crevices, nooks , to carpets, heated and sheltered areas..



Mode of use

Spray on all walls of the premises. On walls, ceilings, openings, equipment, dilute 500ml of concentrate in 50L of water to be sprayed on 1000m² of surface using a suitable sprayer.

Variable ventilation time depending on the ventilation level and the size of the room to be treated.

The product may be applied in the presence of animals by avoiding direct contact with the animals during application and by not spraying troughs, feeders and other food receiving areas.